

## SmartKom Mast Amplifier + Domestic Power Supply

TV-531981 - SmartKom Amplifier and Power Supply



### INTRODUCTION

SmartKom is a professional OTA television signal processing solution designed for simple and easy installation. Users will easily be able to filter, balance, mix and amplify television signals received from up to a maximum of 3 antennas thus, increasing the number of channels received in a given location while avoiding the use of mechanical solutions such as rotors. This allows for the distribution of television programs received from the antennas over a single coaxial cable routed to the home.

SmartKom uses digital filtering technology with very high selectivity and low noise covering the entire television frequency band (VHF low, VHF high and UHF), which allows for the balancing of adjacent channels without loss of signal quality.

Plug & Play; SmartKom not only amplifies the TV signals received from the antenna, but also equalizes the levels of all the received channels so that the weakest channels are not lost and the strongest channels do not over power other channels.

SmartKom is compatible with ATSC 1.0 and ATSC 3.0 including High Definition and Ultra High Definition programs.

SmartKom can be installed indoors or outdoors, within the provided weatherproof enclosure.

SmartKom is powered by the provided power supply installed indoors and uses the coaxial cable as the conductor.

SmartKom is a better alternative to the vast majority of legacy mast amplifiers, regardless of their number of inputs, frequency bands in which they operate and the gain control they use.

Used with a single antenna, SmartKom not only performs amplification, but also achieves perfect signal filtering and balancing. This filtering and balancing is achieved at any location, within the input signal range regardless of the frequency band, and without the need for in-depth technical knowledge of TV signal transmission, reception and distribution.

When used with multiple antennas (3 maximum) SmartKom is the optimal alternative for any installation using multi-input and/or multiband mast amplifiers including rotators used for the reception of TV signals from multiple locations. This eliminates adjustments or television tuner rescanning typically associated with rotators providing optimum signal quality, always.

## SmartKom Mast Amplifier + Domestic Power Supply

### TV-531981 - SmartKom Amplifier and Power Supply

#### CONFIGURATION

SmartKom configuration is straightforward and can be setup in two different ways:

- **Automatic programming**, by pressing the “READJUST” button located on the front of SmartKom, or on the power supply.

By pressing and holding (+5 sec.) channels are scanned and adjusted through the connected inputs. When the scanning process is started, powering

through input is enabled. The green LED will flash slowly to indicate that channels are being scanned through the connected inputs and that SmartKom is being configured according to the channels that have been already found. Once the scanning is completed, the LED will flash faster to confirm the level adjustment. A steady light indicates that the process is completed.

Channels already programmed/found can be also adjusted by SmartKom. In this case, a short press of the button (<3 sec) is needed.

- **Manual programming**, via a wireless connection (Bluetooth) from a smartphone/tablet with the power supply unit.

By using the A Suite app, you can configure the following parameters: channel programming, output level, manual level adjustment and enabling/disabling power supply to inputs. The wireless signal is off every two hours of operation to improve the energy performance and optimize the use of the RF spectrum.

#### Important Safety Instructions

##### Safe installation

- Read these instructions before handling or connecting the equipment. Keep these instructions. Heed all warnings. Follow all instructions.
- Clean only with dry cloth.
- Do not use this apparatus near water. Apparatus shall not be exposed to dripping or splashing and no objects filled with liquids, such as glasses, shall be placed on the apparatus.
- Do not block any ventilation openings. Install in accordance with the manufacturer’s instructions. Please allow air circulation around the equipment.
- Do not place the equipment in a highly humid environment.
- Do not install near any heat sources such as radiators, heat registers, stoves, or other apparatus (including amplifiers) that produce heat.
- Do not place naked flames, such as lighted candles on or near the product.
- Do not place the equipment in a place where it can suffer vibrations or shocks.
- Only use attachments/accessories specified by the manufacturer.

##### Safe operation of equipment connected to the mains supply

- Ambient temperature should not be higher than 113°F.
- Power requirements for this power supply are: 110-120V~ 50/60Hz.
- It is strongly recommended not to connect the power supply to the mains supply until all connections have been done.
- The socket outlet shall be installed near the equipment and shall be easily accessible.
- To disconnect the power supply from the mains supply pull the plug never the cable.
- Protect the power cord from being walked on or pinched particularly at plugs, convenience receptacles, and the point where they exit from the apparatus.
- Unplug this apparatus during lightning storms or when unused for long periods of time.

- Refer all servicing to qualified service personnel. Servicing is required when the apparatus or power supply
- have been damaged in any way, such as power-supply cord or plug is damaged, liquid has been spilled or
- objects have fallen into them, the apparatus or power supply have been exposed to rain or moisture, do not
- operate normally, or they have been dropped.

##### Warning

- Reduce the risk of fire or electric shock, do not expose this apparatus to rain or moisture.
- Do not take the cover off the equipment without disconnecting it from the mains supply.
- This apparatus must be securely attached to the floor/wall in accordance with the installation instructions.
- Do not connect the equipment to the mains supply until it is screwed to the wall.



Power supply equipment designed for indoor use.



This symbol indicates that the power supply complies with the safety requirements for class II equipment.



The present product can not be treated as normal household waste, it must be delivered to the corresponding collection point for waste electrical and electronic equipment (WEEE).



**CAUTION**  
RISK OF ELECTRIC SHOCK  
DO NOT OPEN

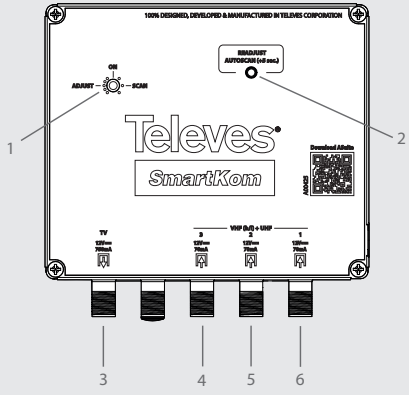


To avoid the risk of electric shock, not open the equipment.

## Description of Connections And Controls

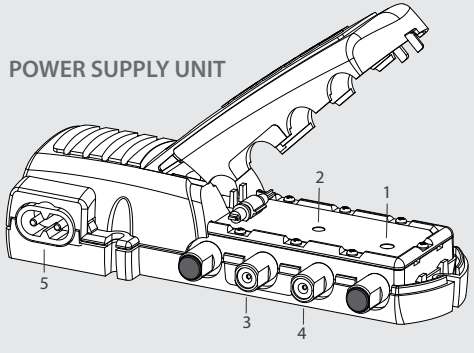
TV-531981 - SmartKom Amplifier and Power Supply

**SMARTKOM MAST AMPLIFIER**



INDICATIONS - LED		
SCAN		Searching for channels
ADJUST		Adjusting
ON		Switched on
- ON               - Fast blink               - Slow blink		

**POWER SUPPLY UNIT**



1. LED Power On / Adjust / Scan
2. Readjust / Autoscan
3. Output
4. Input 3 VHF low/VHF high/UHF
5. Input 2 VHF low/VHF high/UHF
6. Input 1 VHF low/VHF high/UHF

1. LED Power On / Adjust / Scan
2. Adjust/Automatic scan
3. Input
4. Output
5. Power: 110-120 Vac

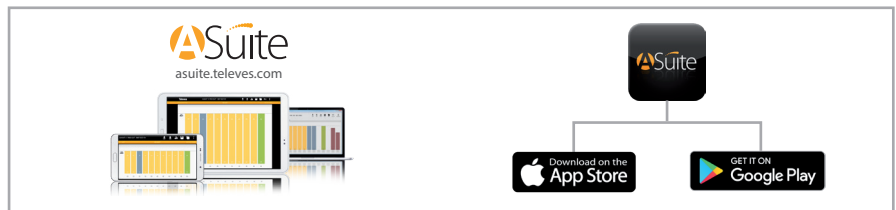
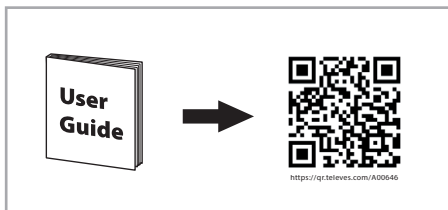
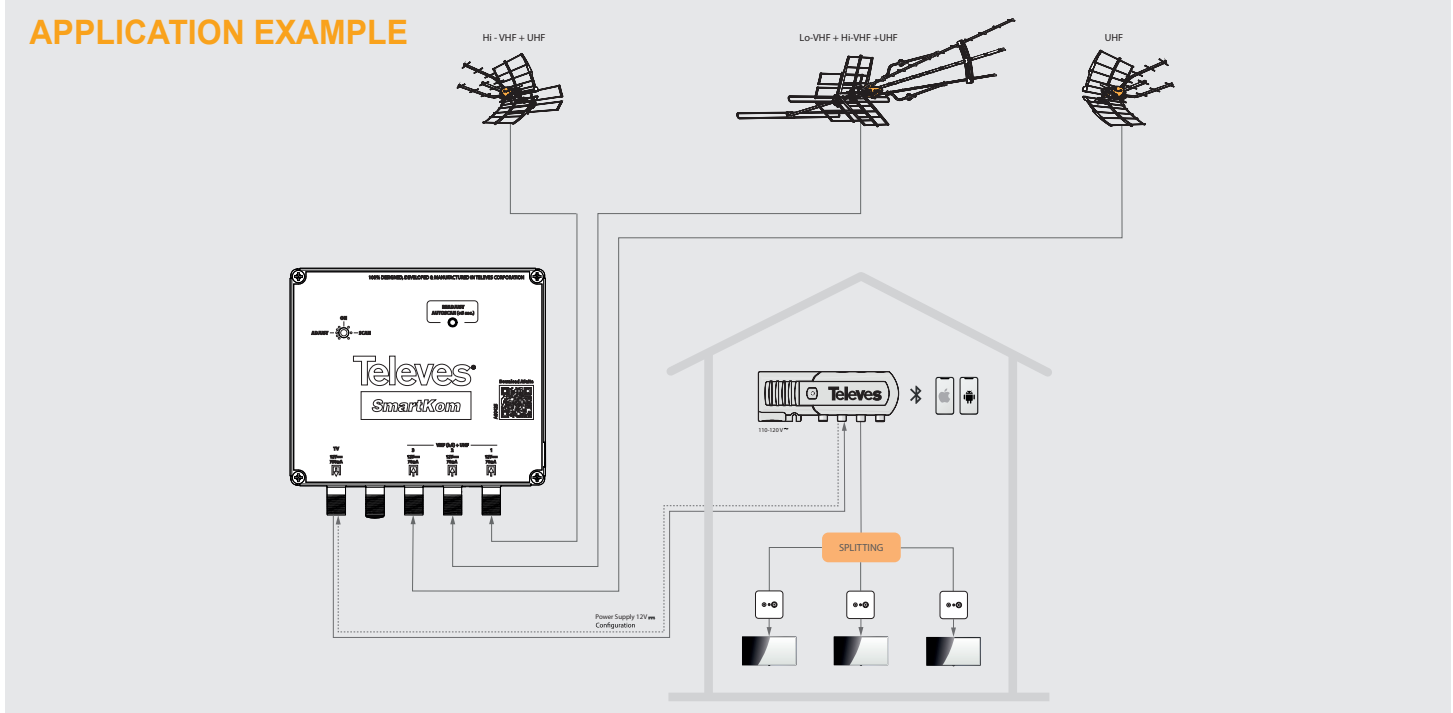
## TECHNICAL SPECIFICATIONS

SMARTKOM MAST AMPLIFIER		3x VHF+UHF
Frequency range	MHz	54-88 / 174-216 / 470-608
Input Dynamic Range	dBmV	-20 - +30
Maximum gain	dB	-
Gain regulation	dB	CAG / AGC
Num. of filters	-	32
Channel/filter programming	-	Lo-V: 2 - 6 / Hi-V: 7 - 13 / UHF: 14 - 36
Filtered channel level regulation	dB	CAG por filtro / AGC per filter
Selectivity	dB	>50 (+/-6MHz) *
Output level	dBmV	UHF => 25 / VHF => 22
Vout regulation	dBmV	UHF => 0 - 25 / VHF => -3 - +22
Chs per filter	-	1
Manual regulation	dB	+ 3
Inputs powering	V	V 12 (AUTO / ON / OFF)
	mA	70 (per input)
Max consumption	mA	500 @12V= (W/O DC IN)
Temperature	°C / °F	- 5 - +45 / 23 - 113
Dimensions	mm / in	137 x 128 x 45 / 5.39 x 5.03 x 177
Weight	g / lb	400 / 0.88
IP	-	23

(\* ) Adjacent channels interference rejection >30dB (+/-1MHz)

POWER SUPPLY		TV - MIX
Frequency range	MHz	47-862
Insertion losses	dB	<2
Output voltage	V	12
Maximum current	mA	750
Mains voltage	V~	110 - 120
Maximum consumption	W	14
Maximum current	mA~	200
Temperature	°C / °F	- 5 - +45 / 23 - 113
Dimensions	mm / in	146 x 53 x 35 / 5.74 x 2.08 x 1.37
Weight	g / lb	286 / 0.63
IP	-	20

## APPLICATION EXAMPLE



Acuerdo de licencia y declaración software de terceros ■ Licence agreement and Third-parties Software declaration ► <https://doc.televés.com>

This equipment has been tested and found to comply with the limits for a Class B digital device, pursuant to part 15 of the FCC Rules. These limits are designed to provide reasonable protection against harmful interference in a residential installation.

This equipment generates, uses and can radiate radio frequency energy and, if not installed and used in accordance with the instructions, may cause harmful interference to radio communications. However, there is no guarantee that interference will not occur in a particular installation. If this equipment does cause harmful interference to radio or television reception, which can be determined by turning the equipment off and on, the user is encouraged to try to correct the interference by one or more of the following measures:

- Reorient or relocate the receiving antenna.
- Increase the separation between the equipment and receiver.
- Connect the equipment into an outlet on a circuit different from that to which the receiver is connected.
- Consult the dealer or an experienced radio/TV technician for help.

Responsible party: Televés USA LLC. Norfolk Tech Center 16596 E. 2nd Avenue Aurora, CO 80011 Telephone: +1 (720) 379 3748 [televés.usa@televés.com](mailto:televés.usa@televés.com)